

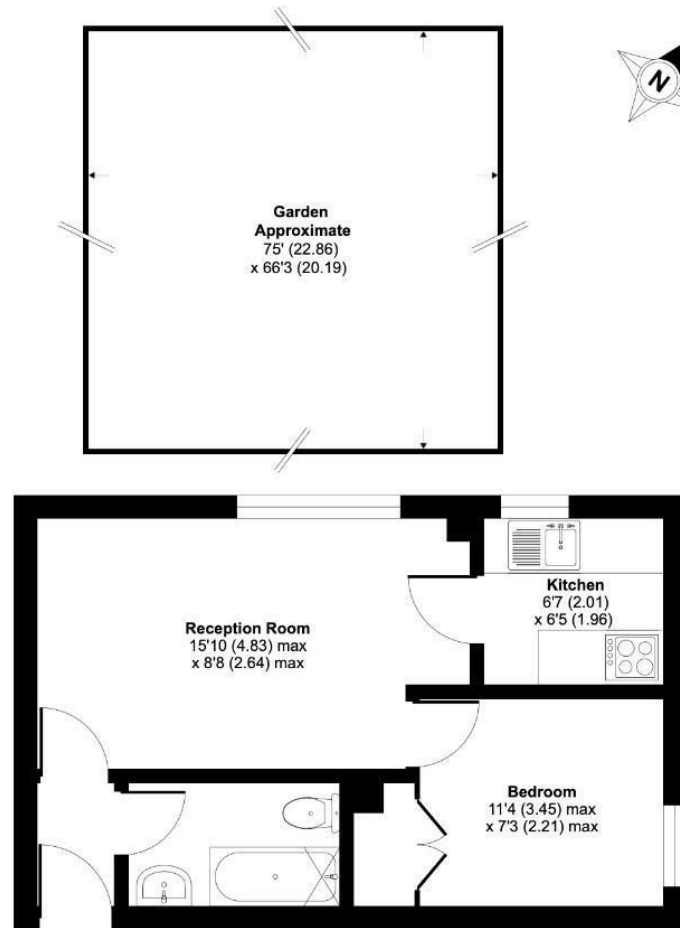
Flat

Yunus Khan Close E17

£235,000

Yunus Khan Close, London, E17

Approximate Area = 325 sq ft / 30.2 sq m
For identification only - Not to scale



GROUND FLOOR

This is a lovely purpose built ground floor apartment moments from the buzz of Walthamstow Central.

The location is perfect for commuters as Walthamstow Central Underground Station is a 5 minute walk away. The cafe's, restaurants and bars of Hoe Street and Walthamstow Village are on your doorstep, making this an exciting and vibrant place to live.

This ground floor apartment is located in a popular block. It has a lovely sitting room with leafy views of the communal gardens. There is a double bedroom with built in storage, a separate kitchen and a modern bathroom with a bath and shower.

Certified Property Measurer
Floor plan produced in accordance with RICS Property Measurement Standards incorporating International Property Measurement Standards (IPMS2 Residential). © ricscom 2020. Produced for Linus Jackson Property Agent. REF: 638304





ENERGY AND EFFICIENCY RATING

Energy Efficiency Rating		
	Current	Potential
Very energy efficient - lower running costs		
(92 plus) A		
(81-91) B		
(69-80) C		
(55-68) D		
(39-54) E		
(21-38) F		
(1-20) G		
Not energy efficient - higher running costs		
England & Wales	EU Directive 2002/91/EC	



OUT AND ABOUT

- Walthamstow Market and High Street - Access the excellent shopping facilities in the Walthamstow Mall and peruse the longest street market in Europe.
- Walthamstow Farmers Market - Weekly Sunday farmers market.
- Wetlands Nature Reserve - Area of protected wetlands.
- The Chequers Public House - Trendy pub serving great food in a relaxed atmosphere.

